

ABOUT KETER TBR

Qingdao New Keter Tyre CO. Ltd., established in 2009, is a professional global tire resourcing Group. With a dedicated technical team, and excellent product development capabilities, KETER has garnered widespread recognition in the market, serving partners in over 170 countries worldwide.

In 2012, the KETER brand was launched, specializing in TBR products. KETER, positioning itself as "Excellent performance, quality choice" focuses on delivering high-performance products at competitive prices. Through close cooperation with state-owned suppliers, we guarantee consistent quality and supply reliability. Our product range includes over 30 patterns and more than 100 Sizes, covering a wide range of tyre types such as Long Haul, Regional, Mixed, Off-Road, and Winter.

Choose KETER as a trusted ally in your transportation.



· professional ·



· quality ·



· Safety ·

The Exclusive KETER Production Line



Rubber Mix Lines
KOBELCO(Japan)



Rubber Calender Lines
IHI(Japan)



Extrusion Lines
TROESTER(Germany)

KETER exclusive production line is located in the northwest of China.

The year-round dry climate is conducive to tyre manufacturing process and greatly reduces the quality problems caused by moisture.



One-Time
Extrusion Aggregates
TROESTER(Germany)



The Building Machine
TOYO(Japan)



The Building Machine
VMI GROUP(Netherland)



Cord Cutting lines
KARL EUGEN FISCHER(Germany)



Dynamic
Balance Machine



X-Ray
Testing Machine



Tyre Uniformity Machine



Holographic Laser Nondestructive
Bubble Testing Machine



TRUCK & BUS TYRE

How to Read the Pattern Name

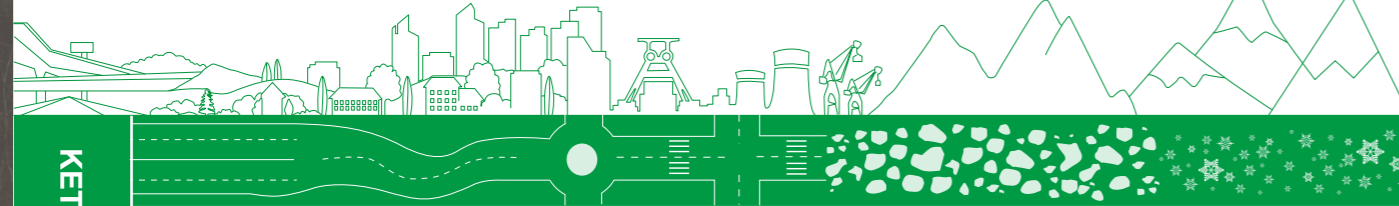
K T H D 1

KETER TYRES

H M O S W
Long Haul Mixed Off-Road Snow

D S A T
Drive Steer All Trailer position

Product Version



KETER TBR

Steer

Drive

Trailer

All position

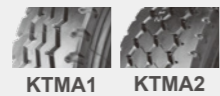
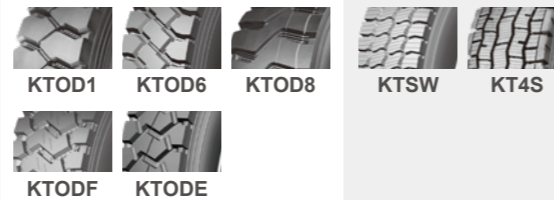
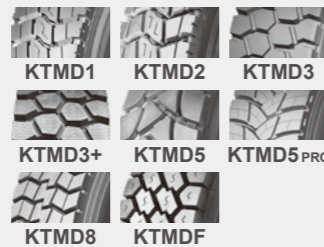
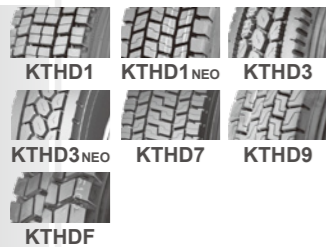


Long Haul

Mixed

Off-Road

Winter & 4S



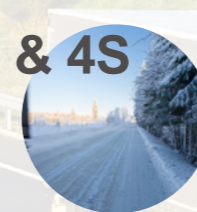
CONTENTS

LONG HAUL 01



KTMD1	02
KTMD1 NEO	03
KTMD3	04
KTMD3 NEO	05
KTMD7	06
KTMD9	07
KTMDF	08
KTHS1	09
KTHS3	10
KTHS5	11
KTHS5 NEO	12
KTHA1	13

WINTER & 4S 14



KTSW	15
KT4S	16

MIXED 17



KTMD1	18
KTMD2	19
KTMD3	20
KTMD3+	21
KTMD5	22
KTMD5 PRO	23
KTMD8	24
KTMDF	25
KTMT1	26
KTMT3	27
KTMA1	28
KTMA2	29

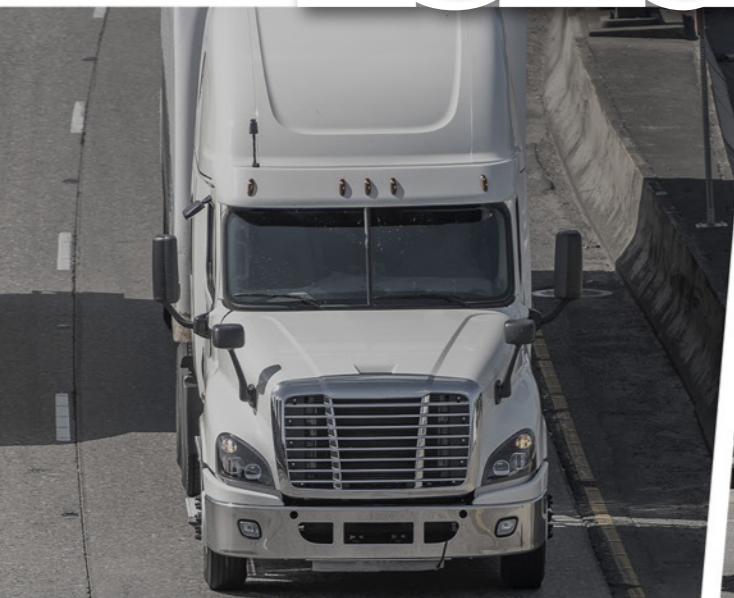
OFF-ROAD 30



KTOD1	31
KTOD6	32
KTOD8	33
KTODF	34
KTODE	35



LONG HAUL



KTHD1

LONG HAUL



- Special compound maintains good irregular wear resistance.
- Special pattern design provides good anti eccentric wear.



Drive



SIZE	PR	LOAD INDEX/ SPEED CODE	STANDARD RIM	OVERALL DIA (mm)/inch	SECTION WIDTH (mm)/inch	LOAD Single/Dual	PRESSURE (kpa/psi)	O.T.D (mm)/32nds	TT/TL
295/80R22.5	18	152/149 K	9.00	1044 / 41.1	298 / 11.7	3550/3250	900 / 131	22 / 28	TL
315/80R22.5	20	157/154 K	9.00	1078 / 42.4	315 / 12.3	4125/3750	900 / 131	21.5 / 27	TL

KTHD1 NEO

LONG HAUL



- Widened tread design.
- Good heat dissipation performance.
- Excellent braking, driving performance.

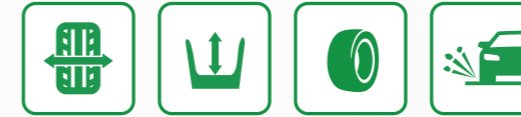


Drive 

SIZE	PR	LOAD INDEX/ SPEED CODE	STANDARD RIM	OVERALL DIA (mm)/inch	SECTION WIDTH (mm)/inch	LOAD Single/Dual	PRESSURE (kpa/psi)	O.T.D (mm)/32nds	TT/TL
295/80R22.5	18	152/149 K	9.00	1046 / 41.2	292 / 11.5	3550/3250	900 / 131	18.5 / 23	TL
315/80R22.5	20	157/154 K	9.00	1078 / 42.4	312 / 12.3	4125/3750	930 / 135	22 / 28	TL

KTHD3

LONG HAUL



- Widened tread design provides excellent driving and gripping power.
- Extra deep tread provides powerful traction and a long tread life.
- Closed shoulder maintains good irregular wear resistance.
- Excellent crack and tear resistance character.



Drive 

SIZE	PR	LOAD INDEX/ SPEED CODE	STANDARD RIM	OVERALL DIA (mm)/inch	SECTION WIDTH (mm)/inch	LOAD Single/Dual	PRESSURE (kpa/psi)	O.T.D (mm)/32nds	TT/TL
11R22.5	16	146/143 K	8.25	1054 / 41.5	279 / 11.0	3000/2725	830 / 120	20.5 / 26	TL
11R24.5	16	149/146 K	8.25	1104 / 43.5	279 / 11.0	3250/3000	830 / 120	21 / 26	TL
295/75R22.5	16	146/143 K	9.00	1014 / 39.9	298 / 11.7	3000/2725	830 / 120	23 / 29	TL

KTHD3 NEO

LONG HAUL



- Good puncture resistance.
- Good grip and driving performance.
- Good heat dissipation performance.



Drive 

SIZE	PR	LOAD INDEX/ SPEED CODE	STANDARD RIM	OVERALL DIA (mm)/inch	SECTION WIDTH (mm)/inch	LOAD Single/Dual	PRESSURE (kpa/psi)	O.T.D (mm)/32nds	TT/TL
11R22.5	16	146/143 L	8.25	1065 / 41.9	279 / 11.0	3000/2725	830 / 120	23 / 29	TL
11R24.5	16	149/146 K	8.25	1116 / 43.9	279 / 11.0	3250/3000	830 / 120	23 / 29	TL
295/75R22.5	16	146/143 K	9.00	1026 / 40.4	294 / 11.6	3000/2725	830 / 120	23 / 29	TL

KTHD7

LONG HAUL



- Wide and deep tread design extends tread life.
- Special tread pattern deliver a smooth and consistent wear.
- Uniform block and lug design brings efficient traction on wet and dry roads.



Drive 

SIZE	PR	LOAD INDEX/ SPEED CODE	STANDARD RIM	OVERALL DIA (mm)/inch	SECTION WIDTH (mm)/inch	LOAD Single/Dual	PRESSURE (kpa/psi)	O.T.D (mm)/32nds	TT/TL
12R22.5	18	152/149 K	9.00	1085 / 42.7	300 / 11.8	3550/3250	930 / 135	21 / 26	TL

KTHD9

LONG HAUL



- Wide and deep tread design extends tread life.
- Special tread pattern deliver a smooth and consistent wear.
- Uniform block and lug design brings efficient traction on wet and dry roads.



Drive 

SIZE	PR	LOAD INDEX/ SPEED CODE	STANDARD RIM	OVERALL DIA (mm)/inch	SECTION WIDTH (mm)/inch	LOAD Single/Dual	PRESSURE (kpa/psi)	O.T.D (mm)/32nds	TT/TL
275/8022.5	18	149/146 L	8.25	1012 / 39.8	276 / 10.9	3250/3000	900 / 131	19 / 24	-

KTHDF

LONG HAUL



- Good traction performance.
- Excellent resistance of groove cracking.
- Excellent anti-clamping stone and self-cleaning performance.
- Excellent durability.



Drive 

SIZE	PR	LOAD INDEX/ SPEED CODE	STANDARD RIM	OVERALL DIA (mm)/inch	SECTION WIDTH (mm)/inch	LOAD Single/Dual	PRESSURE (kpa/psi)	O.T.D (mm)/32nds	TT/TL
9.5R17.5	18	143/141 J	6.75	842 / 33.1	240 / 9.4	2725/2575	875 / 127	15.5 / 20	TL
225/80R17.5	18	123/122 L	6.75	805 / 31.7	226 / 8.9	1550/1500	700 / 102	14 / 18	TL
235/75R17.5	18	143/141 J	6.75	797 / 31.4	233 / 9.2	2725/2575	875 / 127	15.5 / 20	TL
315/80R22.5	20	157/154 K	9.00	1044 / 41.1	312 / 12.3	4125/3750	900 / 131	20 / 25	TL

KTHS1

LONG HAUL



- Tiny grooves, less noise and rolling resistance.
- Better braking, higher safety.
- Concave on the shoulder combined with low-heat-building formula makes better heat dissipation.



Steer 

SIZE	PR	LOAD INDEX/SPEED CODE	STANDARD RIM	OVERALL DIA (mm)/inch	SECTION WIDTH (mm)/inch	LOAD Single/Dual	PRESSURE (kpa/psi)	O.T.D (mm)/32nds	TT/TL
285/75R24.5	16	147/144 L	8.25	1050 / 41.3	283 / 11.1	3075/2800	830 / 120	14 / 18	TL
295/80R22.5	18	152/149 L	9.00	1044 / 41.1	298 / 11.7	3550/3250	900 / 131	15 / 19	TL
315/80R22.5	20	157/154 L	9.00	1078 / 42.4	312 / 12.3	4125/3750	900 / 131	15 / 19	TL

KTHS3

LONG HAUL



- Wide tread surface and even contact area enhance mileage.
- Optimized Z-shaped tread grooves improve steering and handling.
- Four longitudinal grooves provide excellent drainage, improving wet grip and enhancing safety and control.



Steer 

SIZE	PR	LOAD INDEX/SPEED CODE	STANDARD RIM	OVERALL DIA (mm)/inch	SECTION WIDTH (mm)/inch	LOAD Single/Dual	PRESSURE (kpa/psi)	O.T.D (mm)/32nds	TT/TL
11R22.5	18	149/146 L	8.25	1054 / 41.5	279 / 11.0	3250/3000	930 / 135	15.5 / 20	TL
12R22.5	18	152/149 L	9.00	1085 / 42.7	300 / 11.8	3550/3250	930 / 135	18 / 23	TL
11.00R20	18	152/149 K	8.0	1085 / 42.7	293 / 11.5	3550/3250	930 / 135	16.5 / 21	TT
12.00R20	20	156/153 K	8.5	1125 / 44.3	315 / 12.4	4000/3650	900 / 131	16.5 / 21	TT
295/80R22.5	18	152/149 L	9.00	1044 / 41.1	298 / 11.7	3550/3250	900 / 131	16 / 20	TL
315/80R22.5	20	157/154 L	9.00	1044 / 41.1	312 / 12.3	4215/3750	900 / 131	16 / 20	TL
385/65R22.5	24	164 K	11.75	1072 / 42.2	389 / 15.3	5000	930 / 135	16.5 / 21	TL

KTHS5

LONG HAUL



- Improved tread design, high wear resistance and eccentric wear resistance.
- Low rolling resistance, Less fuel consumption, good handling quality.



Steer 

SIZE	PR	LOAD INDEX/ SPEED CODE	STANDARD RIM	OVERALL DIA (mm)/inch	SECTION WIDTH (mm)/inch	LOAD Single/Dual	PRESSURE (kpa/psi)	O.T.D (mm)/32nds	TT/TL
11R22.5	18	149/146 L	8.25	1054 / 41.5	279 / 11.0	3250/3000	930 / 135	15 / 19	TL
11R24.5	16	149/146 M	8.25	1104 / 43.5	279 / 11.0	3250/3000	830 / 120	15 / 19	TL
295/75R22.5	16	146/143 M	9.00	1014 / 39.9	298 / 11.7	3000/2725	830 / 120	15 / 19	TL

KTHS5 NEO

LONG HAUL



- Improved tread design, high wear resistance and eccentric wear resistance.
- Low rolling resistance, Less fuel consumption, good handling quality.



Steer 

SIZE	PR	LOAD INDEX/ SPEED CODE	STANDARD RIM	OVERALL DIA (mm)/inch	SECTION WIDTH (mm)/inch	LOAD Single/Dual	PRESSURE (kpa/psi)	O.T.D (mm)/32nds	TT/TL
9.5R17.5	18	143/141 J	6.75	842 / 33.1	240 / 9.4	2069/1950	830 / 120	14 / 18	TL
11R22.5	18	149/146 L	8.25	1054 / 41.5	279 / 11.0	3250/3000	830 / 120	20.5 / 26	TL
11R24.5	16	149/146 L	8.25	1099 / 43.3	274 / 10.8	3250/3000	830 / 120	15.5 / 20	TL
12R22.5	18	152/149 L	9.00	1078 / 42.4	296 / 11.7	3550/3250	930 / 135	16.5 / 21	TL
215/75R17.5	18	135/133 L	6.00	766 / 30.2	216 / 8.5	2180/2060	850 / 123	-	TL
235/75R17.5	18	143/141 J	6.75	797 / 31.4	233 / 9.2	2725/2575	875 / 127	-	TL
245/70R19.5	16	135/133 L	7.50	840 / 33.1	256 / 10.1	2180/2060	830 / 120	14 / 18	TL
255/70R22.5	16	140/137 L	7.50	930 / 36.6	255 / 10.0	2500/2300	830 / 120	13 / 16	TL
275/70R22.5	18	148/145 M	8.25	958 / 37.7	276 / 10.9	3150/2900	900 / 131	14 / 18	TL
275/80R22.5	18	149/146 L	8.25	1008 / 39.7	280 / 11.0	3250/3000	900 / 131	15 / 19	TL
295/75R22.5	16	146/143 L	9.00	1010 / 39.8	294 / 11.6	3000/2725	830 / 120	15 / 19	TL
295/80R22.5	18	152/149 L	9.00	1044 / 41.1	298 / 11.7	3550/3250	900 / 131	15.5 / 20	TL
315/80R22.5	20	157/154 L	9.00	1044 / 41.1	312 / 12.3	4125/3750	900 / 131	16 / 20	TL

KTHA1

LONG HAUL



- High mileage.
- Reinforced skeleton material design.
- Optimized tyre grounding design prevents irregular wear.



All Position



SIZE	PR	LOAD INDEX/ SPEED CODE	STANDARD RIM	OVERALL DIA (mm)/inch	SECTION WIDTH (mm)/inch	LOAD Single/Dual	PRESSURE (kpa/psi)	O.T.D (mm)/32nds	TT/TL
245/70R19.5	16	135/133 L	7.50	840 / 33.1	256 / 10.1	2180/2060	830 / 120	14 / 18	TL

WINTER & 4S

KT SW

WINTER & 4S



- Special pattern design meets different roads demands, offering longer mileage and saving more cost.
- Unique 3D sipe design provides extra blocks bite during running, enhancing the stability of the whole tread.
- 3D Sipe and common sipe layout on order can be used in different road situations.



Drive 

SIZE	PR	LOAD INDEX/ SPEED CODE	STANDARD RIM	OVERALL DIA (mm)/inch	SECTION WIDTH (mm)/inch	LOAD Single/Dual	PRESSURE (kpa/psi)	O.T.D (mm)/32nds	TT/TL
11R22.5	16	146/143 K	8.25	1060 / 41.7	274 / 10.8	3000/2725	830 / 120	21 / 26	TL
11R24.5	16	149/146 K	8.25	1110 / 43.7	274 / 10.8	3250/3000	830 / 120	21 / 26	TL
295/75R22.5	16	146/143 L	9.00	1022 / 40.2	294 / 11.6	3000/2725	830 / 120	23 / 29	TL

KT 4S

WINTER & 4S



- Deep tread design maximizes longevity.
- 'Snow-World' Design gives the tyres extra bite in snow and mud, avoiding the grip power decreased on snow and mud road condition.
- 'Open Shoulder' Design provides an excellent self-cleaning performance during running.



Drive 

SIZE	PR	LOAD INDEX/ SPEED CODE	STANDARD RIM	OVERALL DIA (mm)/inch	SECTION WIDTH (mm)/inch	LOAD Single/Dual	PRESSURE (kpa/psi)	O.T.D (mm)/32nds	TT/TL
11R22.5	16	146/143 K	8.25	1056 / 41.6	284 / 11.2	3000/2725	720 / 104	22 / 28	TL
11R24.5	26	149/146 K	8.25	1112 / 43.8	274 / 10.8	3250/3000	830 / 120	22 / 28	TL



MIXED



KTMD1

MIXED SERVICE



- Big deep blocks provide strong traction and braking power.
- Open groove and bottom design given excellent self-cleaning performance
Reinforced bead and body strengthen the puncture resistance, tear resistance.



Drive



SIZE	PR	LOAD INDEX/ SPEED CODE	STANDARD RIM	OVERALL DIA (mm)/inch	SECTION WIDTH (mm)/inch	LOAD Single/Dual	PRESSURE (kpa/psi)	O.T.D (mm)/32nds	TT/TL
11.00R20	18	152/149 K	8.00	1085 / 42.7	293 / 11.5	3500/3250	930 / 135	20.5 / 26	TT

KTMD2

MIXED SERVICE



- Big deep blocks provide strong traction and braking power.
- Open groove and bottom design given excellent self-cleaning performance
Reinforced bead and body strengthen the puncture resistance, tear resistance.



SIZE	PR	LOAD INDEX/ SPEED CODE	STANDARD RIM	OVERALL DIA (mm)/inch	SECTION WIDTH (mm)/inch	LOAD Single/Dual	PRESSURE (kpa/psi)	O.T.D (mm)/32nds	TT/TL
7.50R16	14	122/118 K	6.00G	809 / 31.9	212 / 8.3	1500/1320	770 / 112	15.5 / 20	TT
8.25R16	18	132/128 K	6.50H	855 / 33.7	230 / 9.1	2000/1800	870 / 126	15 / 19	TT
9.00R20	16	144/142 K	7.0	1019 / 40.1	259 / 10.2	2800/2650	900 / 131	18.5 / 23	TT
10.00R20	18	149/146 K	7.5	1054 / 41.5	278 / 10.9	3250/3000	930 / 135	19 / 24	TT

KTMD3

MIXED SERVICE



- Excellent puncture and tear resistance of the tread, great driving and braking performance.
- Deeper pattern, longer mileage.



SIZE	PR	LOAD INDEX/ SPEED CODE	STANDARD RIM	OVERALL DIA (mm)/inch	SECTION WIDTH (mm)/inch	LOAD Single/Dual	PRESSURE (kpa/psi)	O.T.D (mm)/32nds	TT/TL
9.00R20	16	144/142 K	7.0	1019 / 40.1	259 / 10.2	2800/2650	900 / 131	18.5 / 23	TT
10.00R20	18	149/146 K	7.5	1054 / 41.5	278 / 10.9	3250/3000	930 / 135	18.5 / 23	TT
11.00R20	18	152/149 K	8.0	1085 / 42.7	293 / 11.5	3550/3250	930 / 135	20 / 25	TT
12.00R20	20	156/153 K	8.5	1125 / 44.3	315 / 12.4	4000/3650	900 / 131	20.5 / 26	TT

KTMD3+

MIXED SERVICE



- The reinforced bead structure allows the tire to have good load-carrying capacity.
- Tires with horizontal tread block arrangement have excellent driving ability.
- The zigzag groove and optimized groove angle design make the tire have good stone discharging ability.



SIZE	PR	LOAD INDEX/ SPEED CODE	STANDARD RIM	OVERALL DIA (mm)/inch	SECTION WIDTH (mm)/inch	LOAD Single/Dual	PRESSURE (kpa/psi)	O.T.D (mm)/32nds	TT/TL
12.00R20	22	158/155 K	8.5	1125 / 44.3	315 / 12.4	4250/3875	970 / 141	19.5 / 25	TT

KTMD5

MIXED SERVICE



- Big deep blocks provide strong traction and braking power.
- Open groove and bottom design given excellent self-cleaning performance Reinforced bead and body strengthen the puncture resistance, tear resistance.



SIZE	PR	LOAD INDEX/ SPEED CODE	STANDARD RIM	OVERALL DIA (mm)/inch	SECTION WIDTH (mm)/inch	LOAD Single/Dual	PRESSURE (kpa/psi)	O.T.D (mm)/32nds	TT/TL
11R22.5	18	149/146 K	8.25	1054 / 41.5	279 / 11.0	3250/3000	930 / 135	22 / 28	TL
315/80R22.5	20	157/154 K	9.00	1078 / 42.4	312 / 12.3	4125/3750	900 / 131	20.5 / 26	TL

KTMD5 PRO

MIXED SERVICE



- Super wide driving surface with stronger driving stability.
- Large tread block design with excellent driving and braking performance, safer handling
- Reinforced case and bead design with excellent durability and loading performance.



Drive 

SIZE	PR	LOAD INDEX/SPEED CODE	STANDARD RIM	OVERALL DIA (mm)/inch	SECTION WIDTH (mm)/inch	LOAD Single/Dual	PRESSURE (kpa/psi)	O.T.D (mm)/32nds	TT/TL
295/80R22.5	18	152/149 K	9.00	1044 / 41.1	298 / 11.7	3550/3250	900 / 131	21 / 26	TL

KTMD8

MIXED SERVICE



- Excellent self-cleaning performance.
- Good groove bottom crack resistance.
- Excellent braking and driving performance.



Drive 

SIZE	PR	LOAD INDEX/SPEED CODE	STANDARD RIM	OVERALL DIA (mm)/inch	SECTION WIDTH (mm)/inch	LOAD Single/Dual	PRESSURE (kpa/psi)	O.T.D (mm)/32nds	TT/TL
11R22.5	18	149/146 L	8.25	1054 / 41.5	279 / 11.0	3250/3000	930 / 135	22 / 28	TL

KT MDF

MIXED SERVICE



- Wide and deep tread pattern provides long tread life.
- Aggressive diagonal block and lug pattern brings highly effective traction and braking performance.
- Tapered grooves and open shoulder prevent stone retention and provide self-cleaning capability.
- Special tread compound prevent tread cutting, chipping and chunking.



Drive 

SIZE	PR	LOAD INDEX/ SPEED CODE	STANDARD RIM	OVERALL DIA (mm)/inch	SECTION WIDTH (mm)/inch	LOAD Single/Dual	PRESSURE (kpa/psi)	O.T.D (mm)/32nds	TT/TL
11R22.5	16	146/143 M	8.25	1054 / 41.5	279 / 11.0	3000/2725	830 / 120	21 / 26.5	TL
11R24.5	16	149/146 M	8.25	1104 / 43.5	279 / 11.0	3250/3000	830 / 120	23 / 29	TL

KT MT1

MIXED SERVICE



- Good handling and traction and super abrasion resistance.
- Excellent heat disipation performance and excellent fuel efficiency.
- Longer mileage.



Trailer 

SIZE	PR	LOAD INDEX/ SPEED CODE	STANDARD RIM	OVERALL DIA (mm)/inch	SECTION WIDTH (mm)/inch	LOAD Single/Dual	PRESSURE (kpa/psi)	O.T.D (mm)/32nds	TT/TL
385/65R22.5	20	160 K	11.75	1072 / 42.2	389 / 15.3	4500/3250	900 / 131	26 / 20	TL

KTMT3

MIXED SERVICE



- Adopt a new tread formula design, longer mileage life.
- The closed shoulder design can improve the tyre's stability and handling, and also can reduce irregular wear.
- The 4 zigzag grooves provide excellent traction and drainage performance for various road conditions.



Trailer 

SIZE	PR	LOAD INDEX/ SPEED CODE	STANDARD RIM	OVERALL DIA (mm)/inch	SECTION WIDTH (mm)/inch	LOAD Single/Dual	PRESSURE (kpa/psi)	O.T.D (mm)/32nds	TT/TL
385/65R22.5	20	160 K	11.75	1072 / 42.2	389 / 15.3	4500	900 / 131	14.5 / 18	TL

KTMA1

MIXED SERVICE



- Good handling and traction and super abrasion resistance.
- Excellent heat dissipation performance and excellent fuel efficiency.
- Longer mileage.



All Position 

SIZE	PR	LOAD INDEX/ SPEED CODE	STANDARD RIM	OVERALL DIA (mm)/inch	SECTION WIDTH (mm)/inch	LOAD Single/Dual	PRESSURE (kpa/psi)	O.T.D (mm)/32nds	TT/TL
6.50R16	12	110/105 K	5.50F	750 / 29.5	185 / 7.3	1060/925	670 / 97	10 / 13	TT
7.50R16	14	122/118 L	6.00G	802 / 31.6	212 / 8.3	1500/1320	770 / 112	13 / 16	TT
8.25R16	16	132/128 K	6.50H	802 / 31.6	212 / 8.3	2000/1800	870 / 126	13 / 16	TT
9.00R20	16	144/142 K	7.0	1019 / 40.1	259 / 10.2	2800/2650	900 / 131	15 / 19	TT
10.00R20	18	149/146 K	7.5	1054 / 41.5	278 / 10.9	3250/3000	930 / 135	15.5 / 20	TT
11.00R20	18	152/149 K	8.0	1085 / 42.7	293 / 11.5	3550/3250	930 / 135	16.5 / 21	TT
11R22.5	18	149/146 M	8.25	1054 / 41.5	279 / 11.0	3250/3000	930 / 135	-	TL
12.00R20	20	156/153 K	8.5	1125 / 44.3	315 / 12.4	4000/3650	900 / 131	17 / 21	TT
12R22.5	18	152/149 L	9.00	1044 / 41.1	304 / 12.0	3550/3250	900 / 131	16/20	TL
315/80R22.5	20	157/154 K	9.00	1078 / 42.4	312 / 12.3	4125/3750	900 / 131	15 / 19	TL

KTMA2

MIXED SERVICE



- Optimized tread blocks improves the grip ability and makes the tyre stay agile in case of sudden movement.
- Air scoop shoulder ensures cool running at high speed, and it ensures longer mileage.
- This technology ensures long tread life under the condition of overloading and long-time running.



All Position



SIZE	PR	LOAD INDEX/ SPEED CODE	STANDARD RIM	OVERALL DIA (mm)/inch	SECTION WIDTH (mm)/inch	LOAD Single/Dual	PRESSURE (kpa/psi)	O.T.D (mm)/32nds	TT/TL
7.00R16	14	118/114 L	5.50F	770 / 30.3	196 / 7.7	1320/1180	770 / 112	11.5 / 14	TT
11.00R20	18	152/149 K	8.0	1085 / 42.7	293 / 11.5	3550/3250	930 / 135	16 / 20	TT
12.00R20	22	158/155 K	8.5	1125 / 44.3	315 / 12.4	4000/3650	900 / 131	16.5 / 21	TT
12.00R24	20	160/157 K	8.5	1226 / 48.3	315 / 12.4	4500/4125	900 / 131	17.5 / 22	TT
11R22.5	18	149/146 M	8.25	1054 / 41.5	279 / 11.0	3250/3000	930 / 135	16 / 20	TL
11R24.5	16	149/146 L	8.25	1054 / 41.5	279 / 11.0	3250/3000	930 / 135	15.5 / 20	TL
13R22.5	20	156/153 L	9.75	1119 / 44.1	318 / 12.5	4000/3650	930 / 135	18 / 23	TL
295/80R22.5	18	152/149 L	9.00	1044 / 41.1	292 / 11.5	3550/3250	900 / 131	16 / 20	TL
315/80R22.5	20	157/154 L	9.00	1044 / 41.1	312 / 12.3	4125/3750	900 / 131	16 / 20	TL



OFF-ROAD



KTOD1

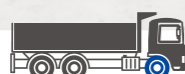
OFF-ROAD



- Transverse big block type and deepened pattern design, provides superior driving performance.
- The open type groove design has a good self-cleaning ability.
- In particular, reinforced carcass design, provide greater carrying capacity.



Drive



SIZE	PR	LOAD INDEX/ SPEED CODE	STANDARD RIM	OVERALL DIA (mm)/inch	SECTION WIDTH (mm)/inch	LOAD Single/Dual	PRESSURE (kpa/psi)	O.T.D (mm)/32nds	TT/TL
9.00R20	16	144/142 D	7.0	1026 / 40.4	260 / 10.2	2800/2650	900 / 131	22.5 / 28	TT
10.00R20	18	149/146 D	7.5	1054 / 41.5	274 / 10.8	3250/3000	930 / 135	23 / 29	TT
12.00R20	20	156/153 G	8.5	1125 / 44.3	315 / 12.4	4000/3650	900 / 131	23.5 / 30	TT

KTOD6

OFF-ROAD



- Excellent grip and driving performance.
- Excellent durability.
- Tear resistance pattern groove.



Drive



SIZE	PR	LOAD INDEX/ SPEED CODE	STANDARD RIM	OVERALL DIA (mm)/inch	SECTION WIDTH (mm)/inch	LOAD Single/Dual	PRESSURE (kpa/psi)	O.T.D (mm)/32nds	TT/TL
12R22.5	18	152/149 D	9.00	1044 / 41.1	298 / 11.7	3550/3250	900 / 131	16 / 20	TL

KTOD8

OFF-ROAD



- Transverse big block type and deepened pattern design, provides superior driving performance.
- The open type groove design has a good self-cleaning ability.
- In particular, reinforced carcass design, provide greater carrying capacity.



Drive



SIZE	PR	LOAD INDEX/ SPEED CODE	STANDARD RIM	OVERALL DIA (mm)/inch	SECTION WIDTH (mm)/inch	LOAD Single/Dual	PRESSURE (kpa/psi)	O.T.D (mm)/32nds	TT/TL
11.00R20	18	152/149 D	8.00	1098 / 43.2	288 / 11.3	3550/3250	930 / 135	24 / 30	TT

KTODF

OFF-ROAD



- Open shoulder design with lower heat dissipation during driving.
- Connecting ribs between pattern blocks increase rigidity and combat groove bottom tearing.
- Deepened traverse pattern groove provides strong driving force on tough road.



Drive



SIZE	PR	LOAD INDEX/ SPEED CODE	STANDARD RIM	OVERALL DIA (mm)/inch	SECTION WIDTH (mm)/inch	LOAD Single/Dual	PRESSURE (kpa/psi)	O.T.D (mm)/32nds	TT/TL
12.00R20	22	156/153 G	8.5	1125 / 44.3	315 / 12.4	4000/3650	900 / 131	23 / 29	TL
295/80R22.5	18	152/149 J	9.00	1044 / 41.1	298 / 11.7	3550/3250	900 / 131	22 / 28	TL

